

New Working New Living

Website: flexispot.co.uk

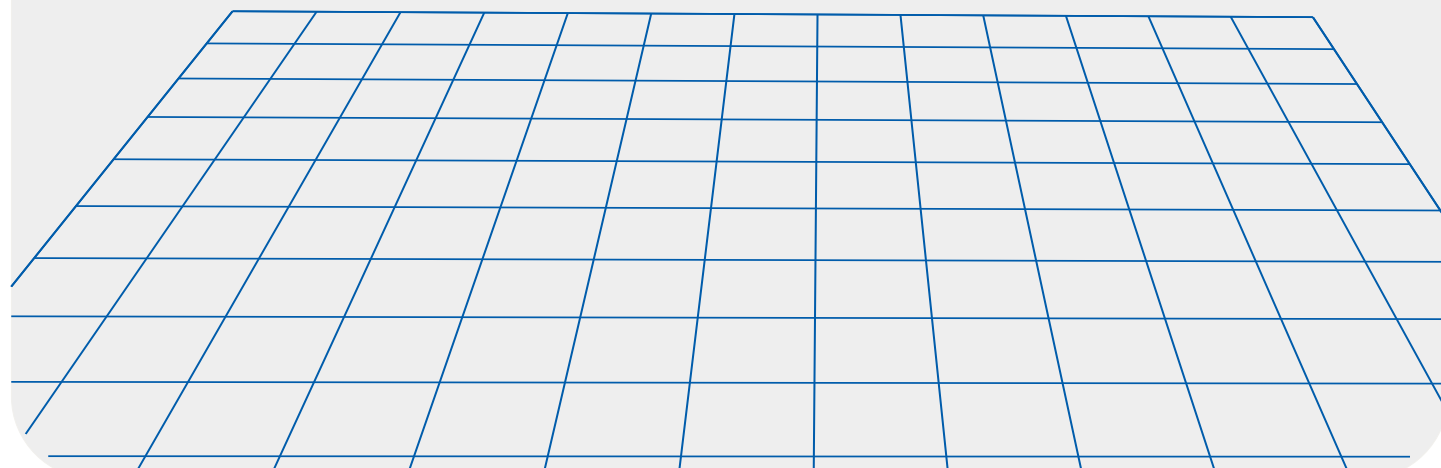
Tel: +44 20 3929 3835 UK

Mail: info@flexispot.co.uk

FLEXISPOT LIMITED, G-PARK UNIT1, MOULTON PARK, SUMMERHOUSE RD, NN3 6WD NORTHAMPTON, UK



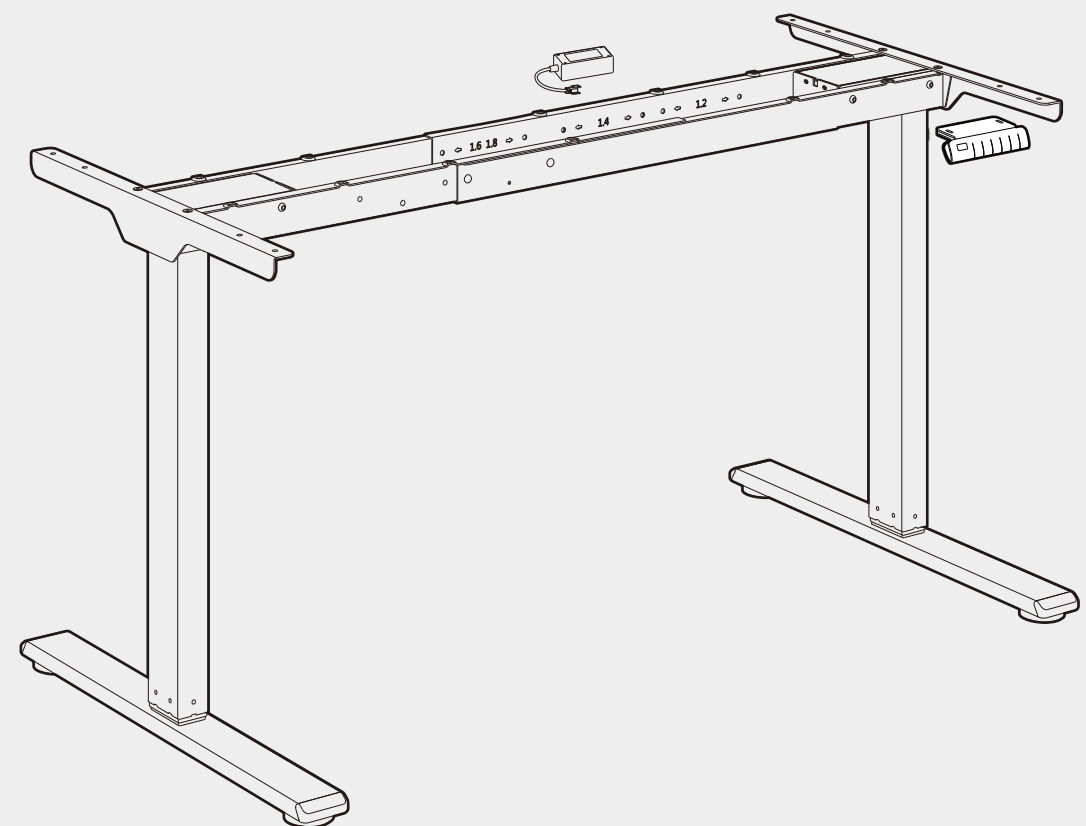
Warranty



FlexiSpot

User Manual

Item No. E5-UKV2



Specifications

Lifting Column	3
Max. Weight Capacity	100kg
Table Frame Width	1116/1286/1486mm
Max. Speed	25mm/s
Height Adjustment	600mm-1250mm
Adaptable Desktop Size	Length: 1200mm-1800mm
	Width: 600mm-800mm
	Thickness:>18mm

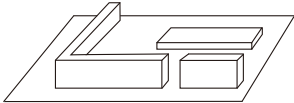
The product has been designed to meet Commission Regulation with regard to ecodesign requirements for electric power consumption of standby mode of electrical and electronic household equipment. The technical information of standby mode:

Mode	Power consumption (Watts)	The period (Minutes)
Standby	≤0.5w	1 min

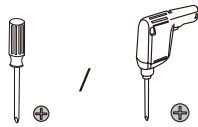
The website URL of the English version electronic instruction manual:
<https://flexispot.co.uk/3-stage-desk-frame-e5.html>

Power Supply	
Manufacturer : Shenzhen Green Power Electronic Technology Co.,Ltd.	
Model : GRP-60WM290018-A	Average Active Efficiency : ≥88.0%
Rated Input : 100-240VAC,50/60Hz ,1.5A	Efficiency at Low Load (10%) : 86.36%
Rated Output : 29.0VDC,1.8A ,52.2W	No-load Power Consumption : ≤0.21 W

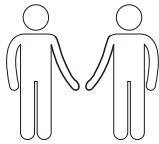
Pre-installation Guide



Install on carpet to prevent scratches



Phillips screwdriver or drill required (not provided)



Get a friend for help

Accessories Package

Attention: The illustrations below are for guidance only and may vary slightly from the actual product. Please contact customer service if any parts are missing or if you have any problems during assembly.

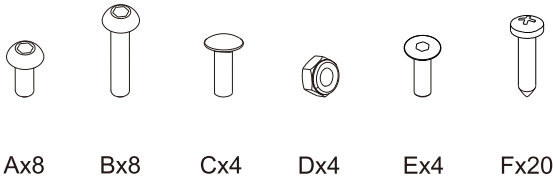
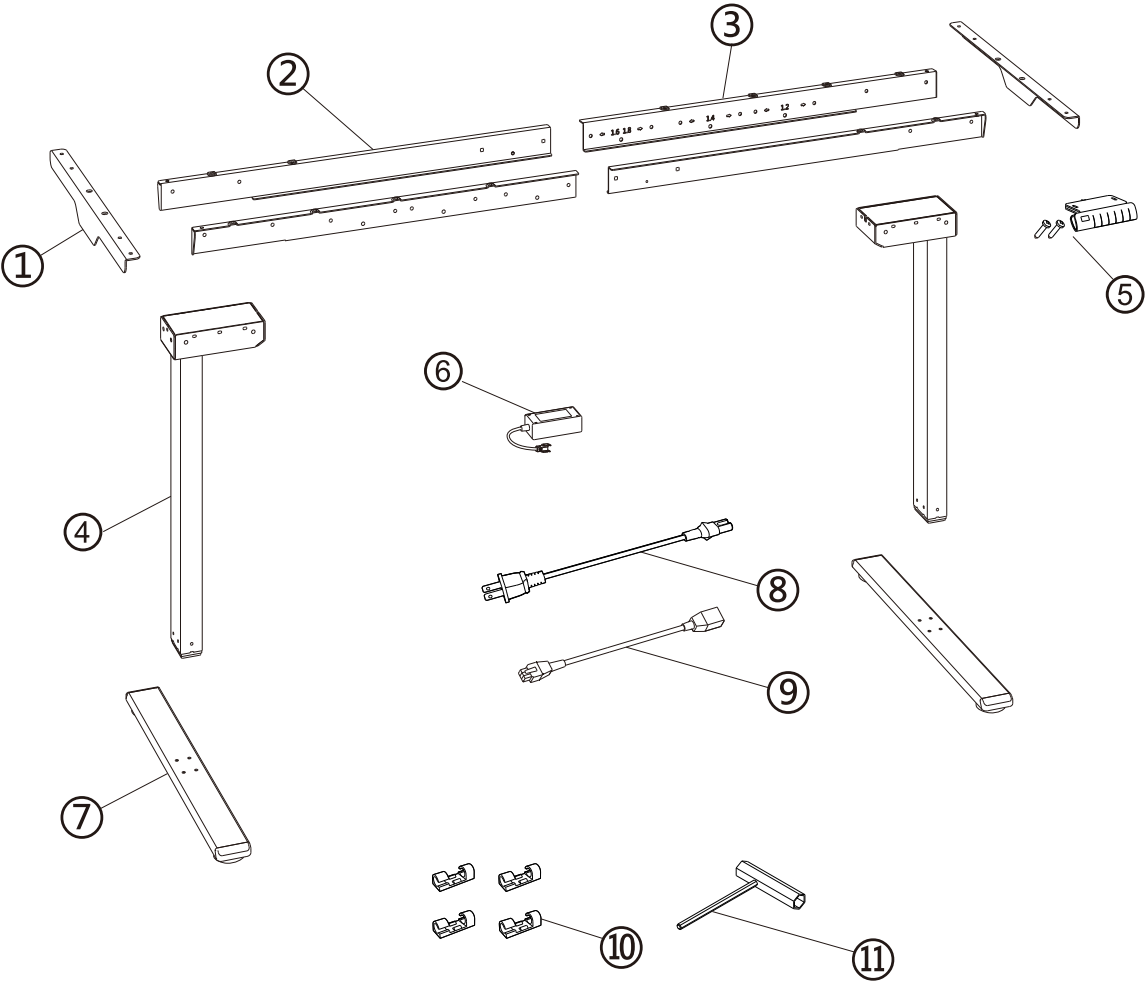


Diagram of Components

①	Support Plate × 2	
②	Left Crossbeam × 2	
③	Right Crossbeam × 2	
④	Column × 2	
⑤	Keypad × 1	
⑥	Adaptor × 1	
⑦	Feet x2	
⑧	Power cord x1	
⑨	Extension cord x1	
⑩	Cable Tie x4	
⑪	T-Socket Wrench x1	

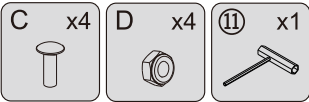
Note: Keypad screws are stored separately.



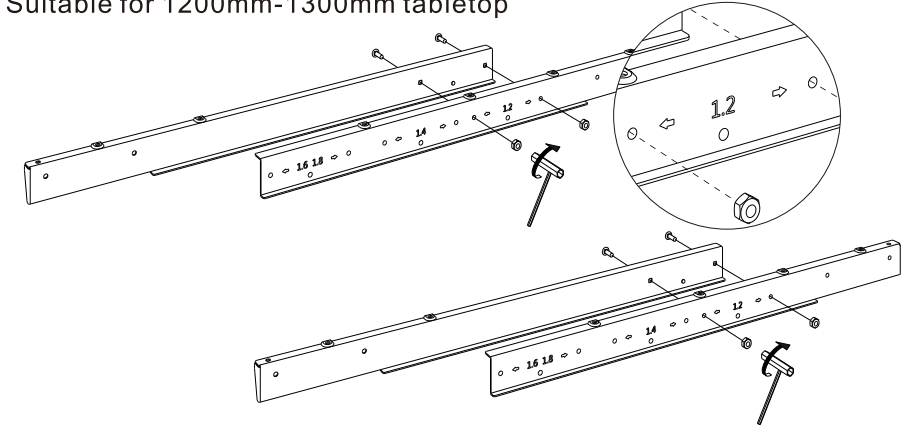
1 Connect the crossbeam



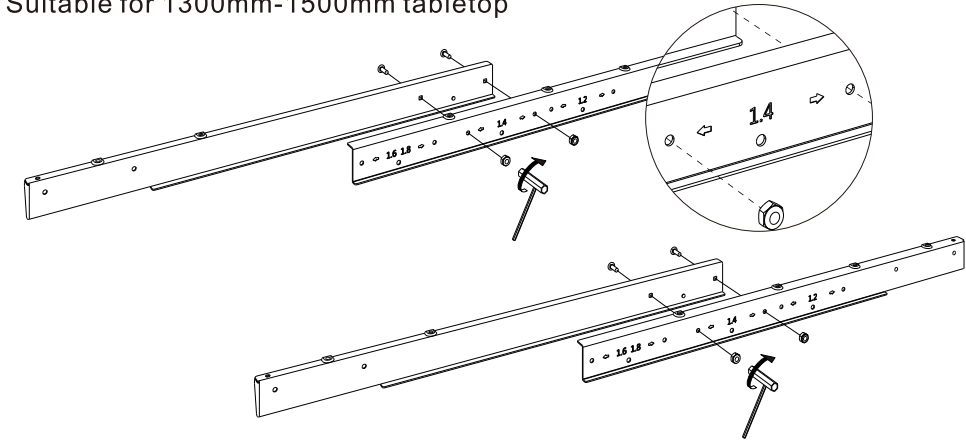
The crossbar is adjustable in three positions, please adjust the crossbar to the appropriate length for the tabletop.



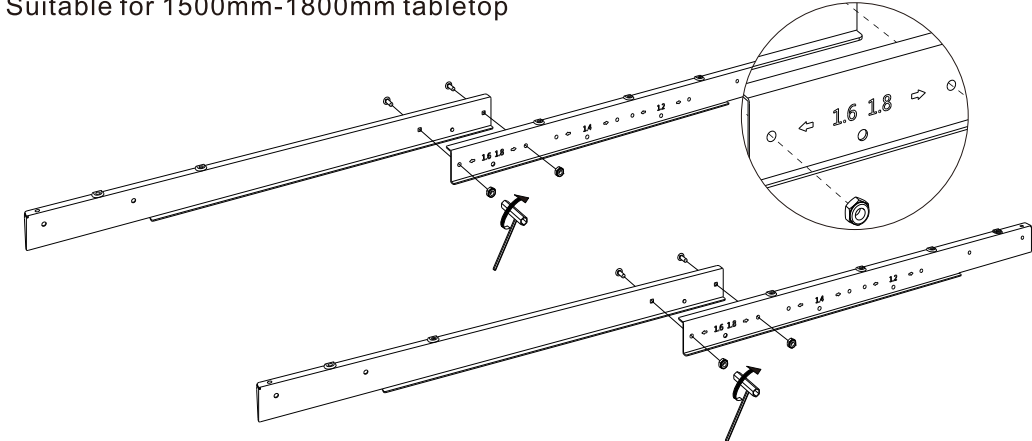
Suitable for 1200mm-1300mm tabletop



Suitable for 1300mm-1500mm tabletop



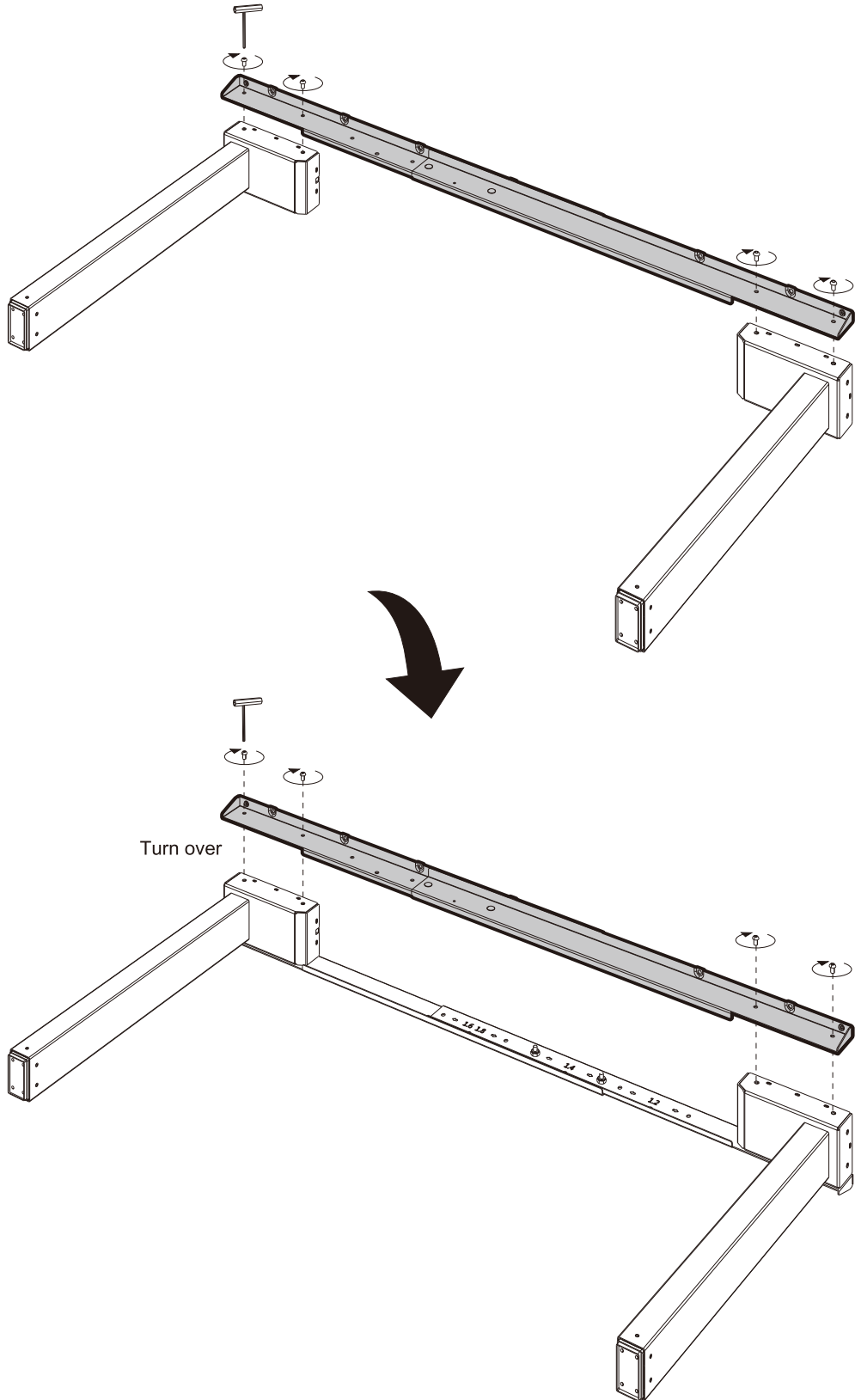
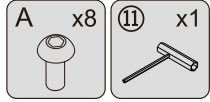
Suitable for 1500mm-1800mm tabletop




2 Install the crossbeam

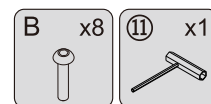
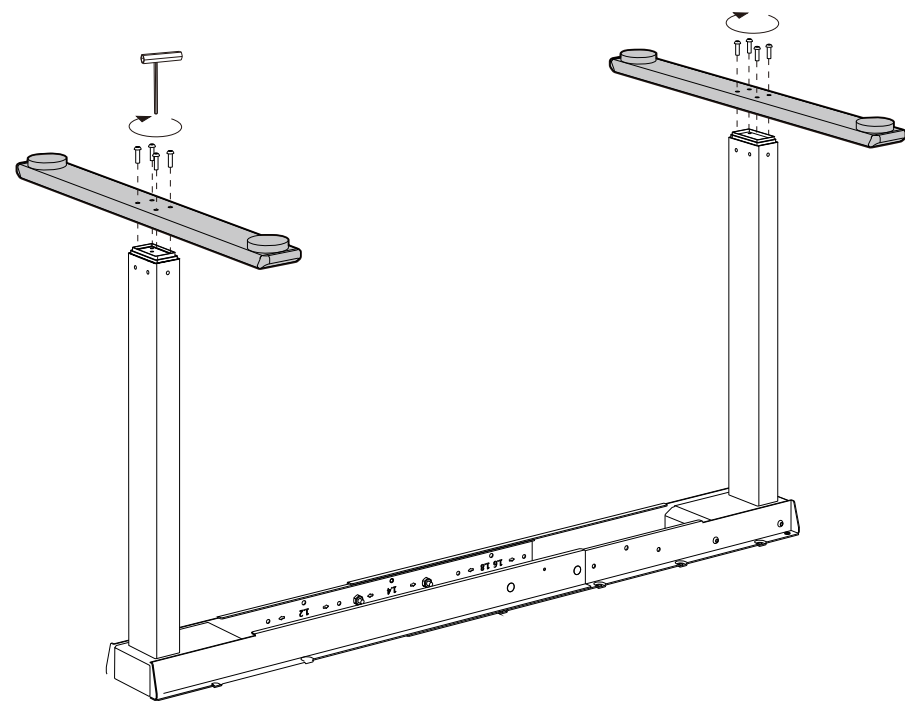


Pre-tighten all screws for mounting the crossbeam and tighten them at the same time.

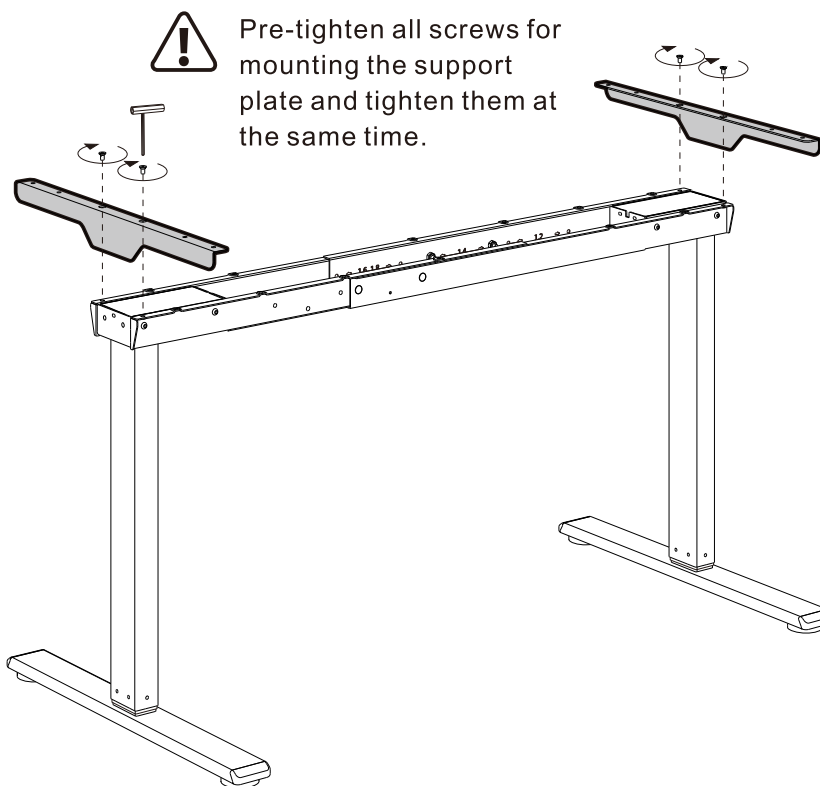



03 Install the feet

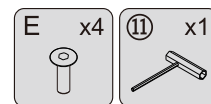
 Installation with a priority on diagonal screws.



04 Install the support plate





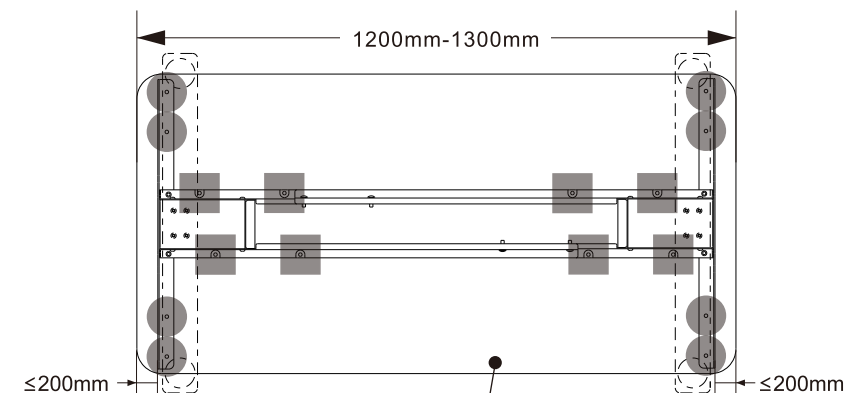
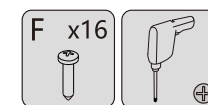
 Pre-tighten all screws for mounting the support plate and tighten them at the same time.




05 Install the desktop

Suitable for 1200mm-1300mm tabletop

The sequence for screw installation is as follows:  

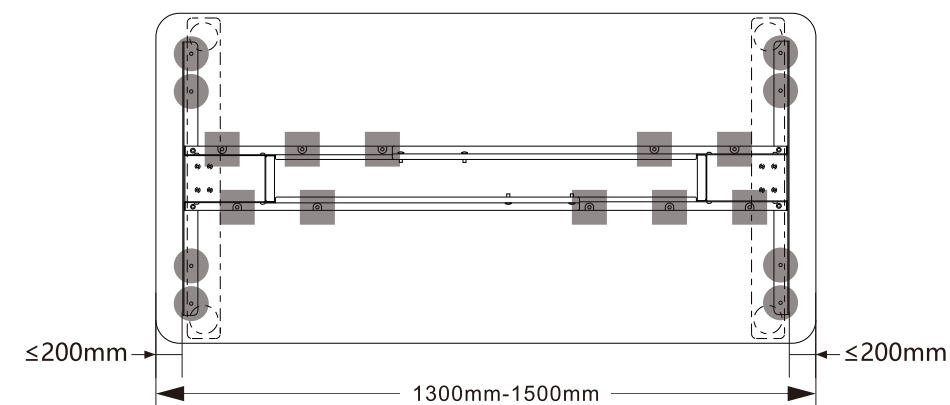
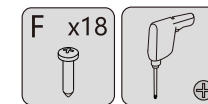


Please ensure sufficient strength for this self-supplied table. 100kg is a reference value, but actual use may vary depending on the wood material.

 The distance from the support plate to the edge of the table plate should not exceed 200mm.

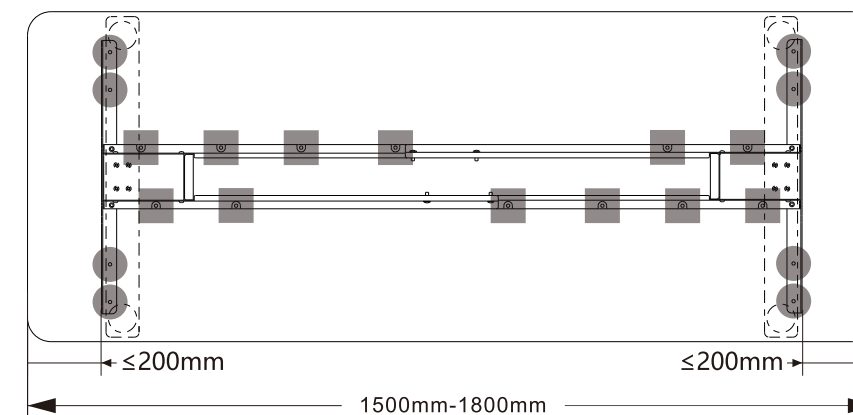
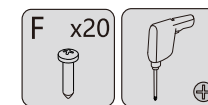
Suitable for 1300mm-1500mm tabletop

The sequence for screw installation is as follows:  



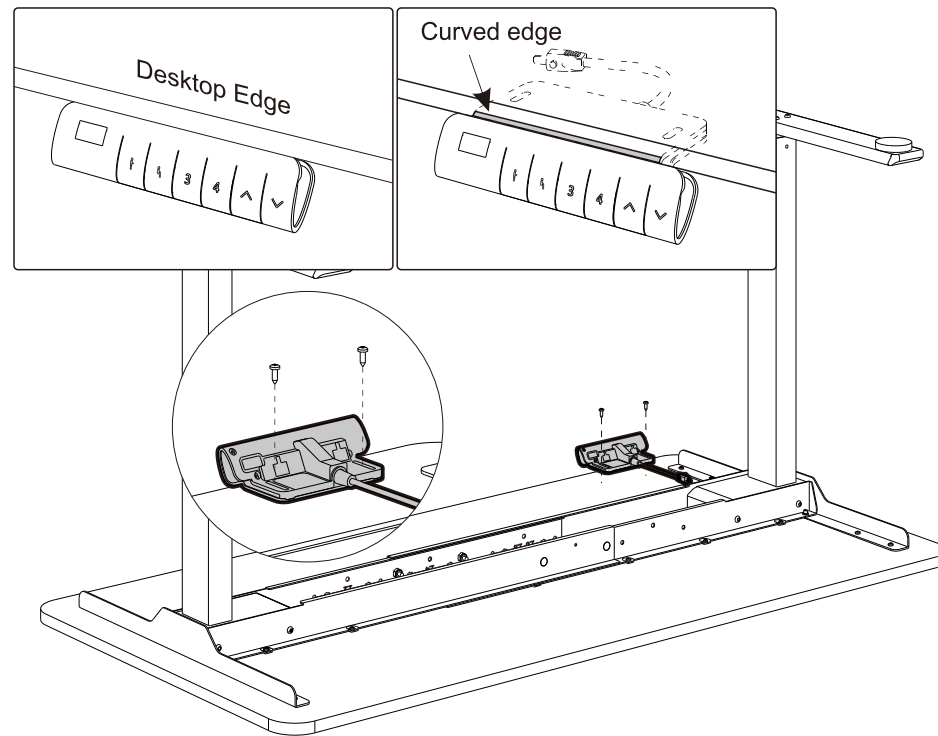
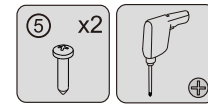
Suitable for 1500mm-1800mm tabletop

The sequence for screw installation is as follows:  

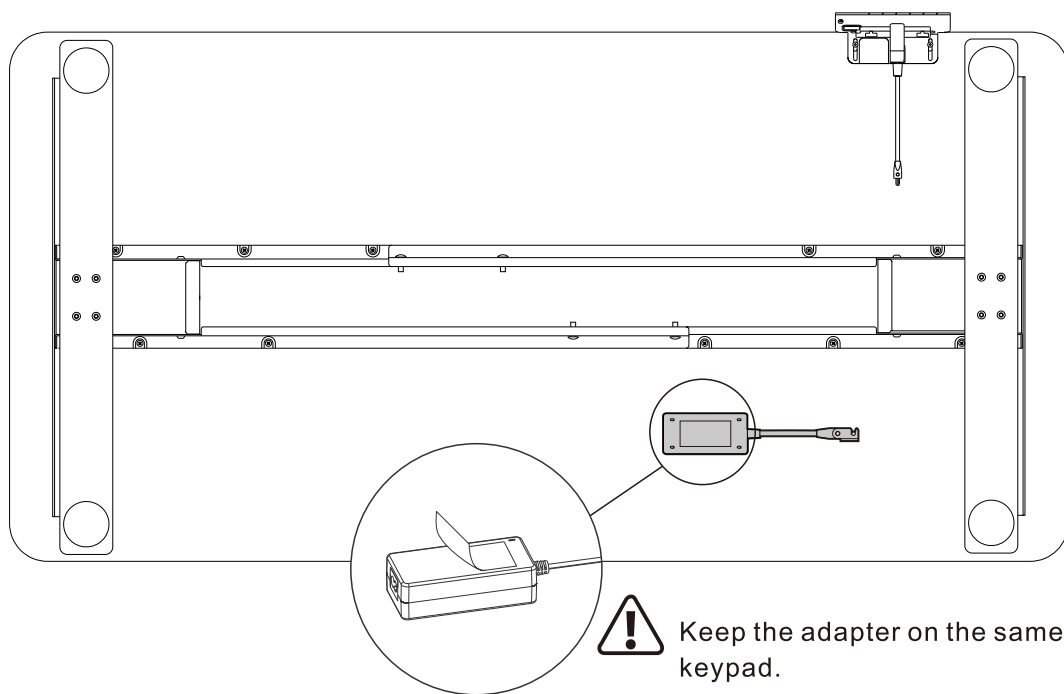


06 Install the keypad

! The curved edge of the keypad is flush with the edge of the desktop.

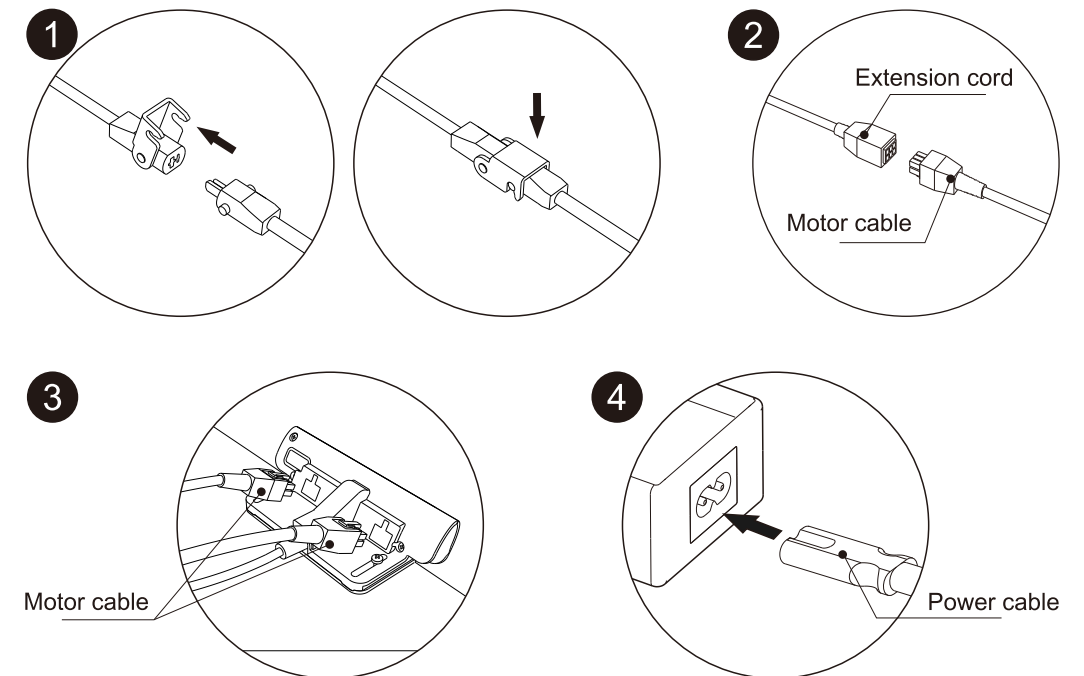
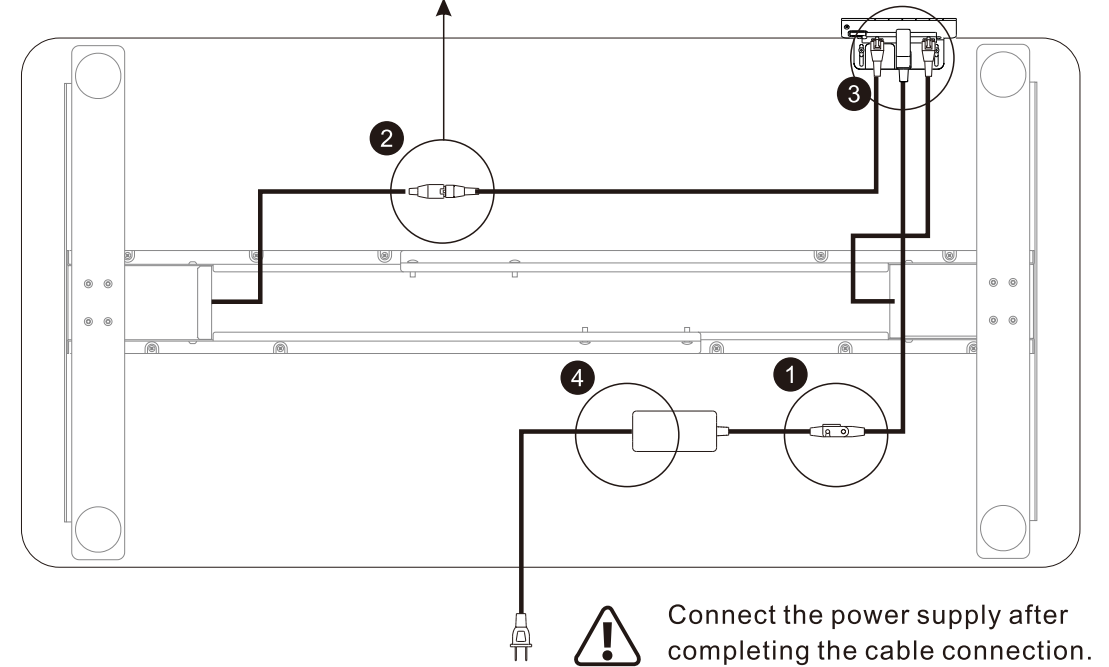


07 Install the adapter

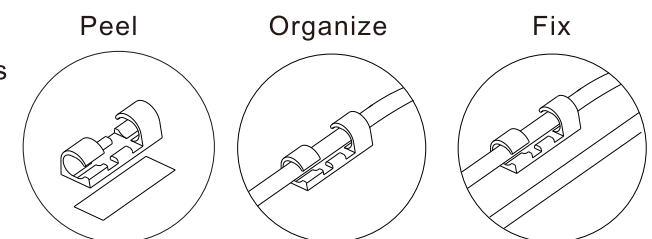


08 Connect cables

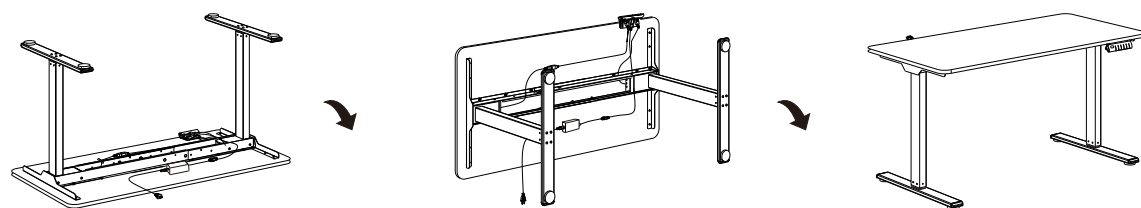
! If the motor cable can be plugged directly into the keypad, there is no need to connect an extension cable.



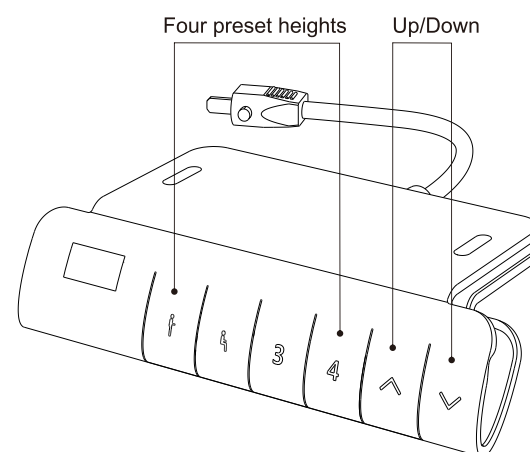
Use Cable clip to secure the various connecting wires to the desktop, keeping the cables tidy.



09 Flip the table



Keypad Instruction



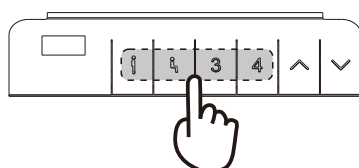
Attention

Please ensure that there are no obstructions to the table and that all wires are long enough to move the table up and down.

Advice

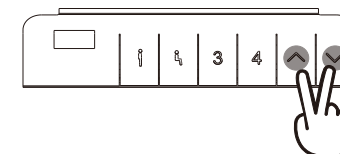
Preset your comfort level to "1" when sitting and "2" when standing, plus other preset heights can be freely set to other heights.

● Height Memory Function



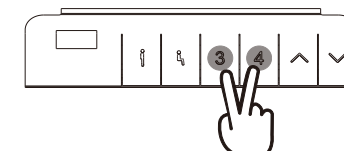
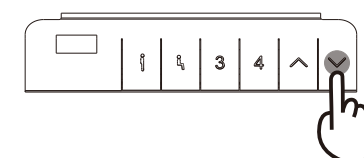
- When the height-adjustable desk is stationary, press and hold the button "1" for 3 seconds. The display will show "5-1", indicating that the current position has been successfully saved.
- The keys denoted as "1", "3", and "4", possess the same memory height functionality as the key labelled "2". To save the height, repeat the aforementioned steps. The positions corresponding to "1", "3", and "4" will store the height, and the display will indicate this with either "5-2", "5-3", or "5-4".
- When the desktop is at any height, click the "1" or "2" or "3" or "4" key, and the lifting table will automatically adjust to the previously saved position.

● Anti-Collision Sensitivity Adjustment



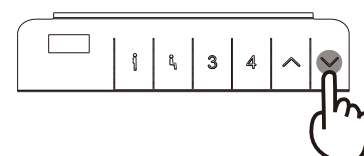
- A total of 4 gears, when the lifting system meets obstruction, trigger this function, back to protect.
- Simultaneously press and hold the "1" and "2" for 5 seconds to switch the sensitivity. One operation can switch to one level, divided into 4 levels—"0", "1", "2", "3".
- The display shows "R-0" means the anti-collision function is turned off; the display shows "R-1" means low sensitivity; the display shows "R-2" means medium sensitivity; the display shows "R-3" means high sensitivity.
- When the desk rises or falls, it will rebound immediately when encountering obstacles to prevent damage.

● Reset Function



- Reset specific operations
Method (1): Press and hold the "2" until the desk lowers to its lowest position, then release the key. Next, press and hold the "2" until the digital display shows the current height, then release to complete the reset.
Method (2): Simultaneously press and hold the "3" and the "4" for 3 seconds until the LED display shows "r5t", then release the buttons to enter reset mode. Next, press and hold the "2" until the digital display shows the current height, then release to complete the reset.
- When the lift system malfunctions, press and hold the "2" until the desk lowers to its lowest position, then release the button. Next, press and hold the "2" until the digital display shows the current height, then release to complete the reset.

● Code Handling




- If other codes appear and there is no response when pressing the "2" key, please make sure the connection cable is not broken and connected normally, and disconnect the power for more than 10 seconds, reconnect the power source, when the display shows "R5f" or "r5t", then reset.
- If the words "E01" or "E02" appear, let the table rest for 18 minutes or more and it will be ready for normal use.
- If the table still does not work properly after performing the above operations, please contact customer service.

Resolving Common Issues

This list is used for checking and solving common faults and errors. Please contact the manufacturer if problem you encounter is not on the list below.

Faults	Method for solutions
Electronic functions are not functioning properly	Check whether the cable connection is normal;
Rising at a low speed	Check if overloaded, max loading: 100 kg;
Downward sliding	
Frequently reposition	
Only down but not up or only up but not down	Reset;
Not enough up&down height	
The bottom cannot rise	
Overwork (Duty cycle: Max2min on/18min OFF)	Restart after suspending for 18mins while connecting to power;
Press the button and the desk goes up instead of down	Check for obstructions underneath the table or any wire harnesses hanging down.

Attention

1. Power supply: AC100V - 240V, frequency 50/60HZ;
2. Working environment: 0 - 40°C;
3. Before cleaning, you have to unplug the power supply cable. Clean with a slightly damp cloth to wipe away the surface dust. Keep all electrical components away from liquids. Do not damage the connection line, and keep the plug in a safe position.
4. Examine the appliance frequently for signs of wear or damage. If there are such signs, or if the appliance has been misused or does not work, contact the supplier for further information.
5. Inside the control box, there are electronic components, metal parts, plastic parts, wires and so on. They should be disposed of in accordance with the local laws and regulations. They cannot be disposed of as household waste.
6. Before using the product, please make sure the product has been installed correctly.
7. When operating a switch that initiates and maintains the movement of the furniture or terminates the movement of the furniture or causes a change of the direction of the movement of the furniture, make sure that other persons are kept away.
8. Placement of furniture to avoid creating entrapment hazards with other furniture.
9. Before starting use of the product, please read the instructions to fully understand all the product's functions and settings.
10. Keep children away from electric height-adjustable desks, control units and handsets. Manufacturer is not responsible for any damages that result from children's unpredictable behaviour.
11. Slight noise caused by the multi-wedge belt or brake system will not impact the use of this product.
12. Do not use corrosive or abrasive materials to clean this product and please dispose of cleaning solutions in an environmentally friendly manner.
13. Understand the risks associated with using this product. Children or those with cognitive impairment should not use this product without supervision.
14. If the power supply cord is damaged or broken, it must be replaced by the manufacturer or a relevant specialist to avoid any injuries.
15. Please operate in a clean and safe environment. For example, do not leave around your tools. And always be careful to deal with packaging materials in order to avoid any kinds of possible danger. Potential choking risk exists when children play with plastic bags!
16. The appliance is only to be used with the unit provided
17. For indoor use only. 
18. If necessary, retain the original package for future transportation.

Recycling and Disposal

This product cannot be disposed of as household waste. To prevent damage to the environment, this product should be recycled. Please use the relevant recycling systems available to you or contract the distributor or manufacturer for recycling assistance.

Manufacturer: Loctek Ergonomic Technology Corp.
Address: 588 Qihang South Road Binhai Industrial Zone, Yinzhou District Ningbo, Zhejiang 315145 P.R. China
Importer: FLEXISPOT LIMITED, G-PARK UNIT1, MOULTON PARK, SUMMERHOUSE RD, NN3 6WD
NORTHAMPTON, UK